



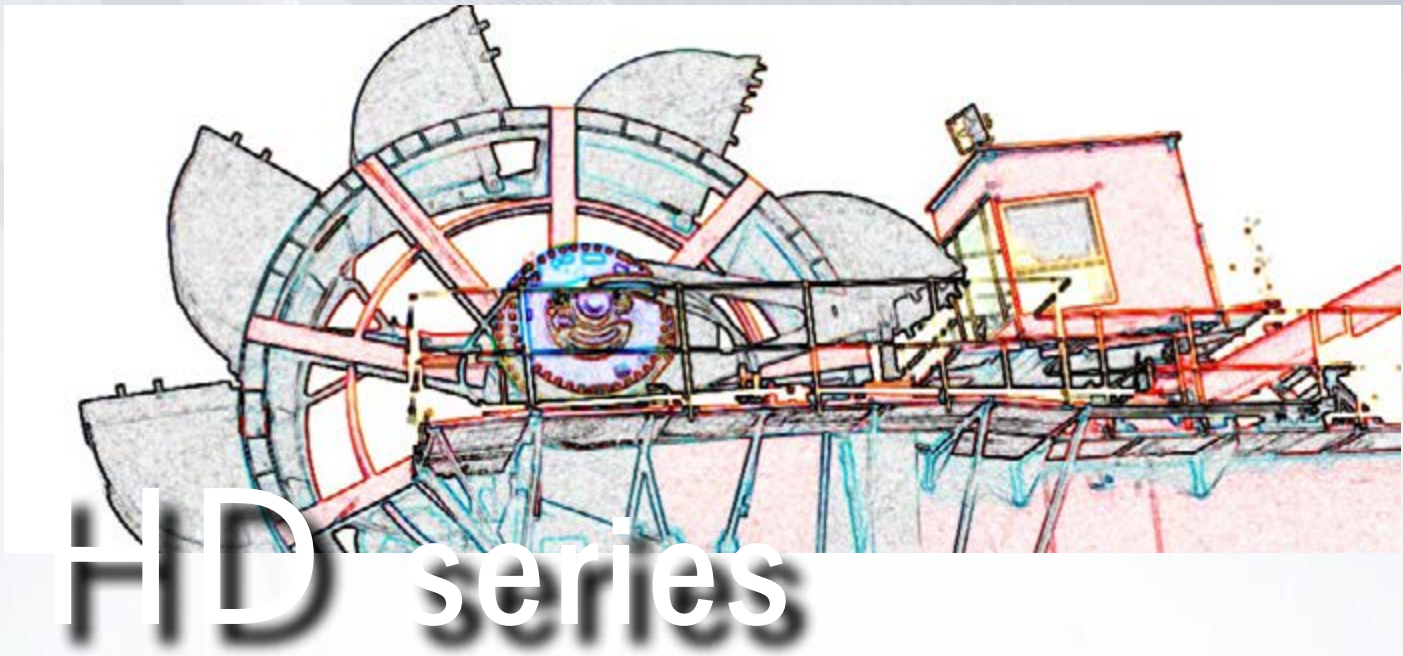
ISO 9001-2008 Certified

MASCOT®

Radial Piston Hydraulic Motor



✓ LD Series ✓ MD Series ✓ MDS Series ✓ 820 Series ✓ HD Series



MASCOT HD Series Hydraulic Motors aim to provide high torque for low speed applications. On specific request, the motors can also be custom-made to suit high speed requirements. These motors incorporate the “high-flow” distribution system. The HD Series motors are always torque arm mounted, making them the ideal choice for applications such as Bucket Wheel Drive, Apron Feeder, Kiln Drive etc., to eliminate misalignment.

The motors run with high efficiency and the power output from the motor is as high as 1000 KW. The Mascot HD Series motors ensure trouble free operation even in dusty environmental conditions.

Options

- ✓ Customized shaft
- ✓ Integral multi plate disc brake
- ✓ High speed versions
- ✓ Double shaft
- ✓ Super low noise
- ✓ Corrosion resistant material
- ✓ Through hole shaft of various sizes
- ✓ Custom finish
- ✓ Deep water submersible
- ✓ Non magnetic material
- ✓ Dual displacement

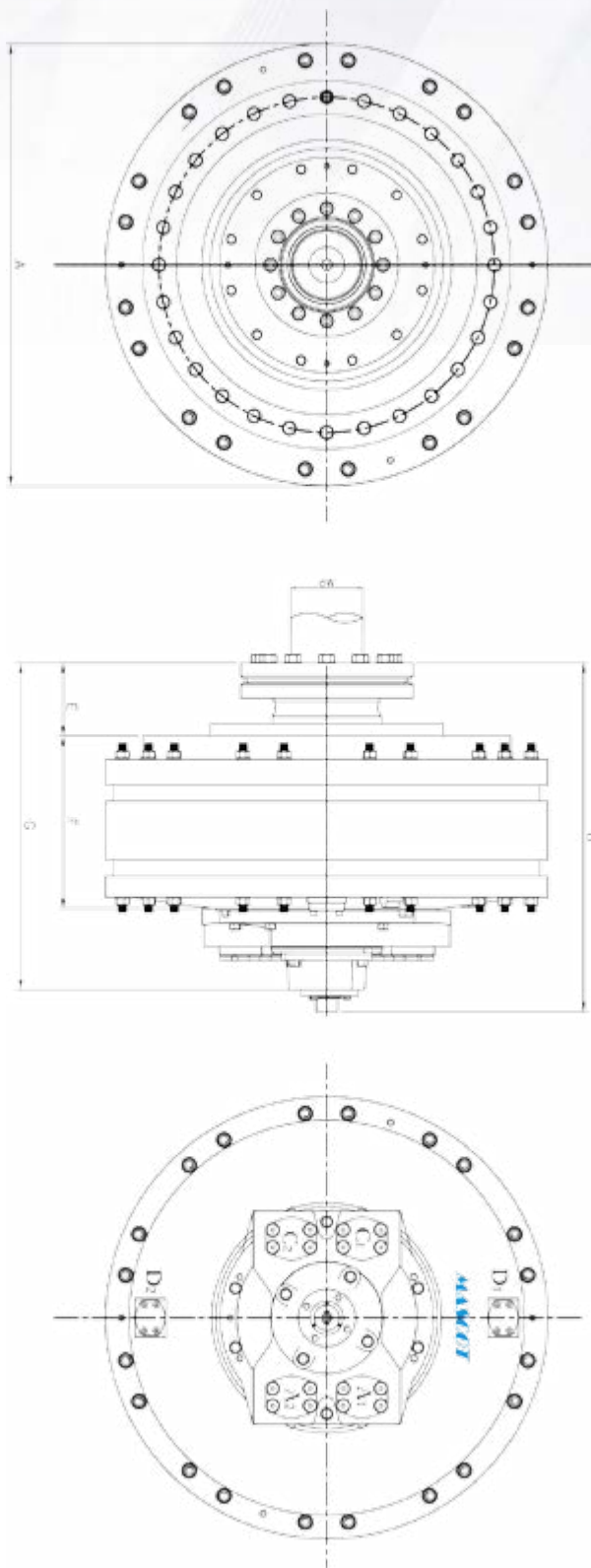
Features

- ✓ Long life
- ✓ High mechanical efficiency
- ✓ Constant torque output
- ✓ Smooth low speed performance < 1rpm
- ✓ Resistance to thermal shock
- ✓ Double shaft sealing
- ✓ Shrink disc coupling
- ✓ Shaft or flange mounting
- ✓ Shock resistance
- ✓ Low noise

MOTOR FRAME SIZE	SPECIFICATION					
	DISP(*) PER REV	TORQUE (THEORETICAL)	TORQUE MAX	SPEED RATED	SPEED MAX**	PRESSURE RATED
METRIC	CM ³ /REV	NM/BAR	NM	RPM	RPM	BAR
HM 25	25320	402	132660	40	60	345
HM 30	30580	486	160380	35	50	345
HM 36	35460	563	185790	32	42	345
HM 50	50168	798	279180	26	38	345
HM 70	70010	1004	331320	20	28	345
HM 100	100767	1602	552690	12	20	345

**High speed version upon request.
 * Any other displacement upon request.

Motor with Shrink disc coupling

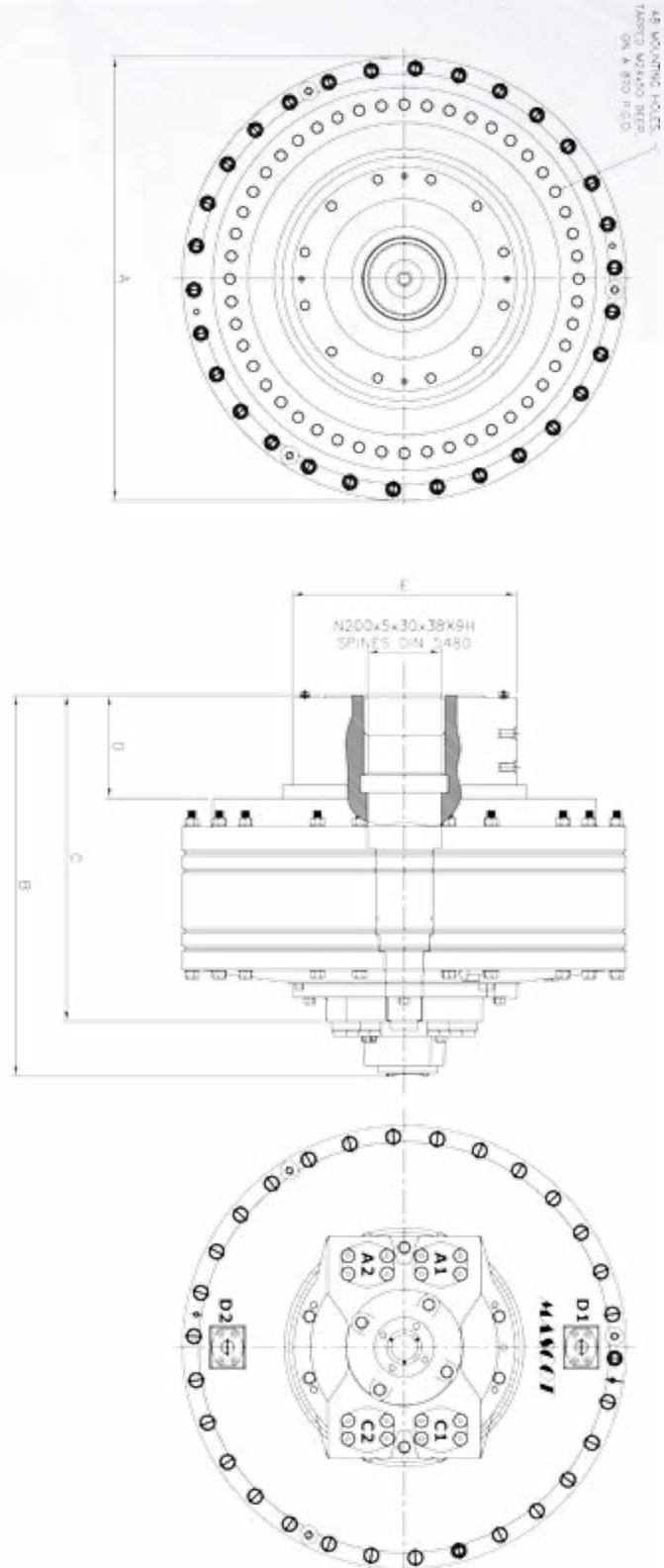


Motor Type	A(MM)	B(MM)	DW(MM)	E(MM)	F(MM)	G(MM)	Weight (kg)	Main Connec (A1, A2, C1, C2)	Drain Connec (D1, D2)
HM25	1140	807	200	160	380	787	2400	SAE 2"	SAE 1 1/4"
HM30	1140	834	260	227	380	810	2520	SAE 2"	SAE 1 1/4"
HM36	1140	834	260	227	380	810	2580	SAE 2"	SAE 1 1/4"
HM50	1280	903	260	235	869	869	2980	SAE 2"	SAE 1 1/4"

* Technical Dimensions are subject to change without prior notice

HD series with brake

Hollow shaft with female splines

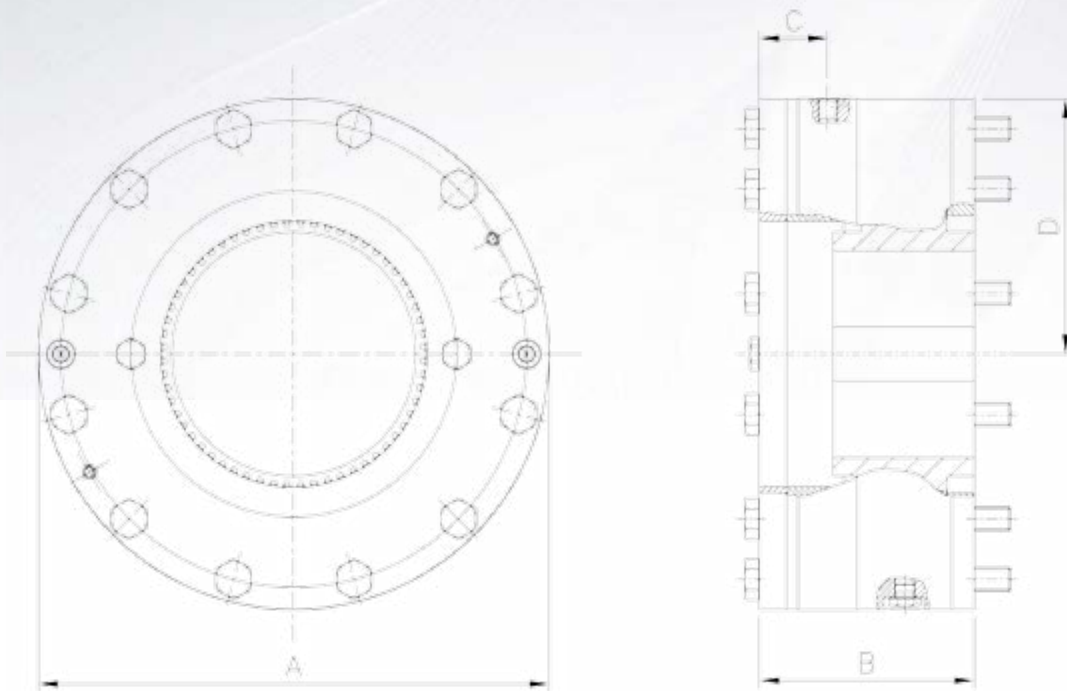


Motor Type	A (MM)	B (MM)	DW (MM)	E (MM)	F (MM)	Weight (Kg)	Main Connec (A1, A2, C1, C2)	Drain Connec (D1, D2)
HMB30	1100	888	755	227	555	2600	SAE 2"	SAE 1 1/4"
HMB50	1250	900	767	289	555	2980	SAE 2"	SAE 1 1/4"

* Technical Dimensions are subject to change without prior notice

HD series with brake

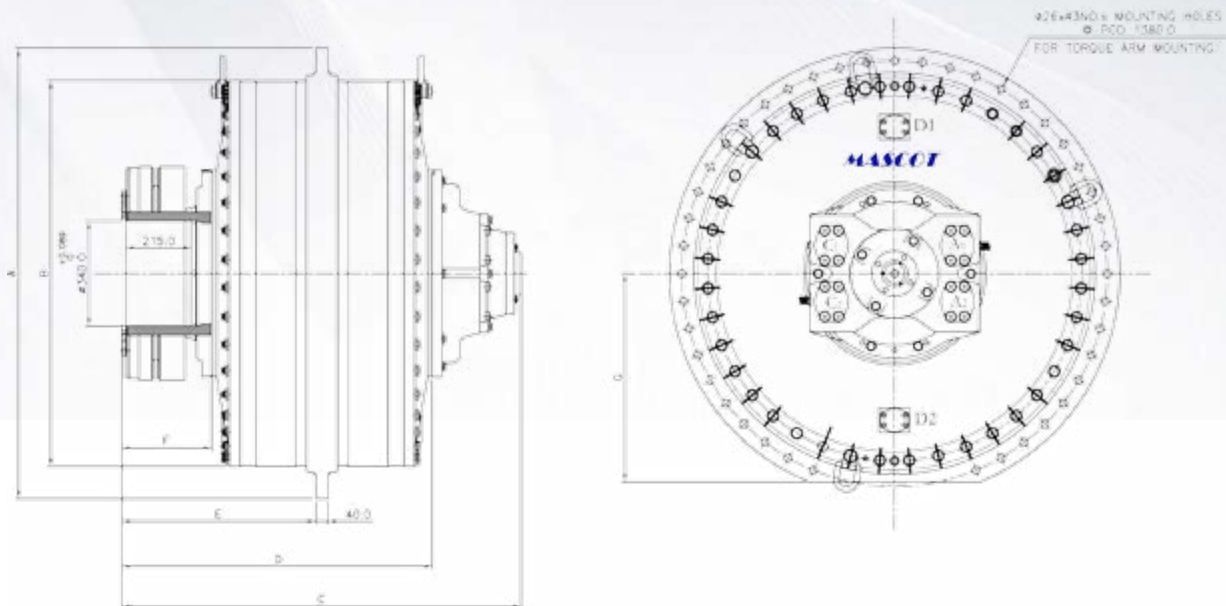
Brake (static/parking)



Motor Type	A(MM)	B(MM)	C(MM)	D(MM)	Brake Release Pressure	Brake Torque NM Max
HMB30	555	247	84	277.5	50 Bar	80,000 to 1,60,000
HMB 50	480	211	86	240	50 Bar	

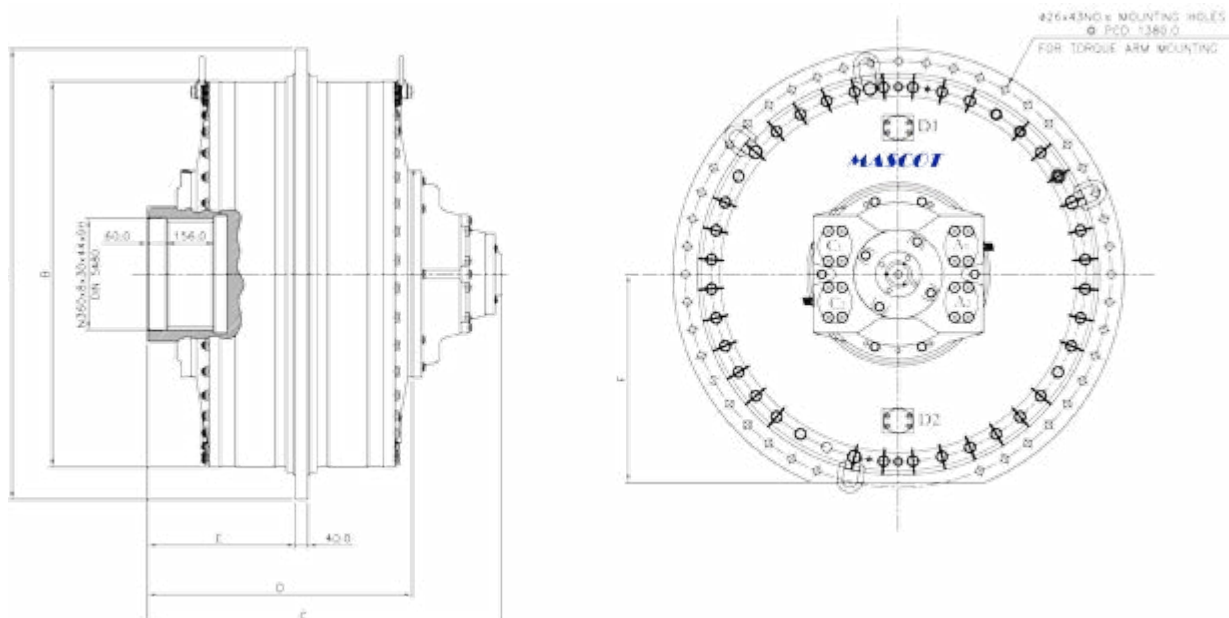
* Technical Dimensions are subject to change without prior notice

Motor with Shrink disc coupling



Motor Type	A(MM)	B(MM)	C(MM)	D(MM)	E(MM)	F(MM)	G(MM)	Weight (Kg)	Main Connec (A1,A2,C1,C2)	Drain Connec (D1,D2)
HMA 70	1460	1250	1295	1007	660	291	675	4450	SAE 2"	SAE 1 1/4"
HMA 100	1460	1250	1295	1007	660	291	675	4650	SAE 2"	SAE 1 1/4"

Hollow shaft with female splines



Motor Type	A(MM)	B(MM)	C(MM)	D(MM)	E(MM)	F(MM)	Weight (Kg)	Main Connec (A1,A2,C1,C2)	Drain Connec (D1,D2)
HMA 70	1460	1250	1107	850	471	675	4100	SAE 2"	SAE 1 1/4"
HMA 100	1460	1250	1107	850	471	675	4400	SAE 2"	SAE 1 1/4"

Application for High Torque Gearless Hydraulic System



Pulp & Paperindustry

- ▶ waste paperhandling
- ▶ cooking process
- ▶ washing and bleaching

Rubber& Plastics

- ▶ winch drives
- ▶ steering
- ▶ dredgers
- ▶ crawlers
- ▶ drive barges

Mining

- ▶ kiln drivers
- ▶ driers
- ▶ chemical
- ▶ evaporators
- ▶ mixers
- ▶ reactors
- ▶ dryers

Power

- ▶ conveyor
- ▶ reclaimer
- ▶ stacker
- ▶ bogie drives
- ▶ unloaders

Marine

- ▶ mouldingmachines
- ▶ process machines
- ▶ belt process
- ▶ screw drives

Material Handling

- ▶ conveyors
- ▶ wagon tippers
- ▶ side arm charges
- ▶ paddle feeders
- ▶ apron feeders
- ▶ stacker reclaimers
- ▶ crushers

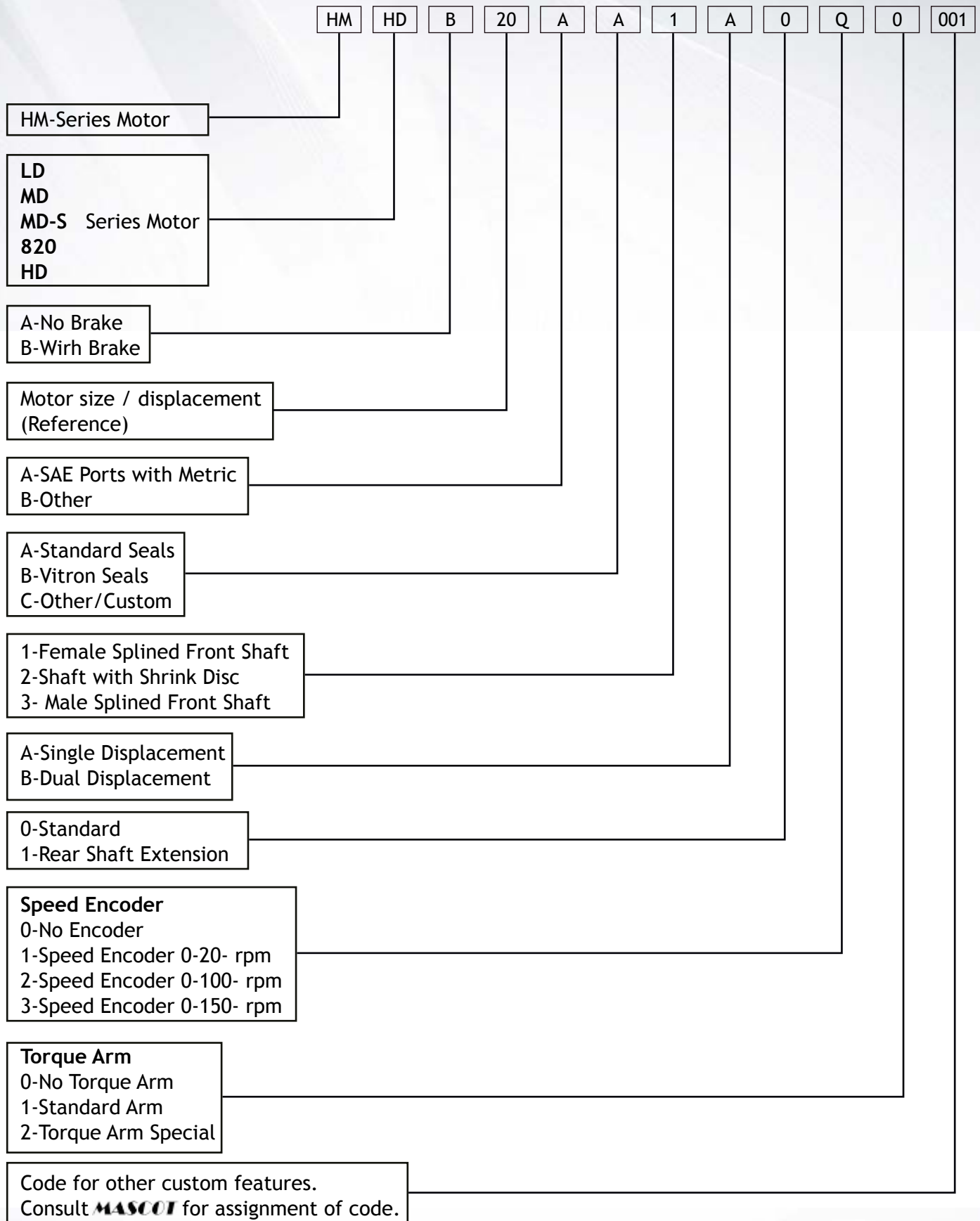
Cement

- ▶ mill drives
- ▶ pressure feeders
- ▶ cane carriers
- ▶ cane unloaders

Sugar

- ▶ ball mills
- ▶ bowl mills
- ▶ feeder conveyors
- ▶ ash handling
- ▶ feeding gates
- ▶ conveyors

Technical data sheet-model destination code





ISO 9001-2008 Certified



MAHA HYDRAULICS PRIVATE LIMITED

Plot No. F - 62, SIPCOT Industrial Complex
Irungattukottai, Sriperumbudur Taluk
Kanchipuram District - 602 105
Tamil Nadu, India.

Tel : +91- 44 - 4719 3081 / 82 / 83
Fax : +91- 44 - 4719 3080
Email : sales@mahahydraulics.com
web : www.mahahydraulics.com